

A W O R L D O F S O L U T I O N S

Kanawha
Scales & Systems

PIONEER Systems

LIFT TRUCK DATA
MANAGEMENT SYSTEM



www.kanawhascales.com

Leading the Weigh Forward!

The **KSS PIONEER** data terminal, software and weighing equipment offers the reliability, accuracy and durability that modern material handling companies demand for their operations. The **KSS PIONEER** captures and transmits real-time data from lift truck scales, allowing customers to attain efficient integration of weighing and data management.

Highlights and Benefits:

- Accurate weighing
- One step weighing saving time, money and freight charges
- Increased profits through proper freight classification
- Wireless communication and data collection
- Cost savings via efficient equipment & operator utilization
- NTEP/certified legal for trade (CC15-091)
- 1 year limited warranty

PIONEER Industry Sectors:

- LTL carriers
- Freight terminals
- Warehouses
- Recycling centers
- Grocers
- Shippers & more

KSS PIONEER Features:

- 7" LCD touchscreen
- 5 programmable hot keys
- Windows embedded
- RF functions: wireless LAN
- 9-36 VDC power (48V optional)
- Integrated barcode scanner
- Fanless and ruggedized aluminum housing

KSS PIONEER Reweigh Software:

KSS Reweigh Software is utilized by the operator to perform many functions:

- Enter operator ID
- Scan pro numbers
- Display unit ID and serial numbers
- Maintain and transmit records to **KSS RELAY** Software
- Calibration verifications
- Interact with peripheral equipment such as printers, bar code scanners and RFID tag readers
- Integrates with dimensioner units
- Cross dock software integration capabilities

KSS RELAY Software Features:

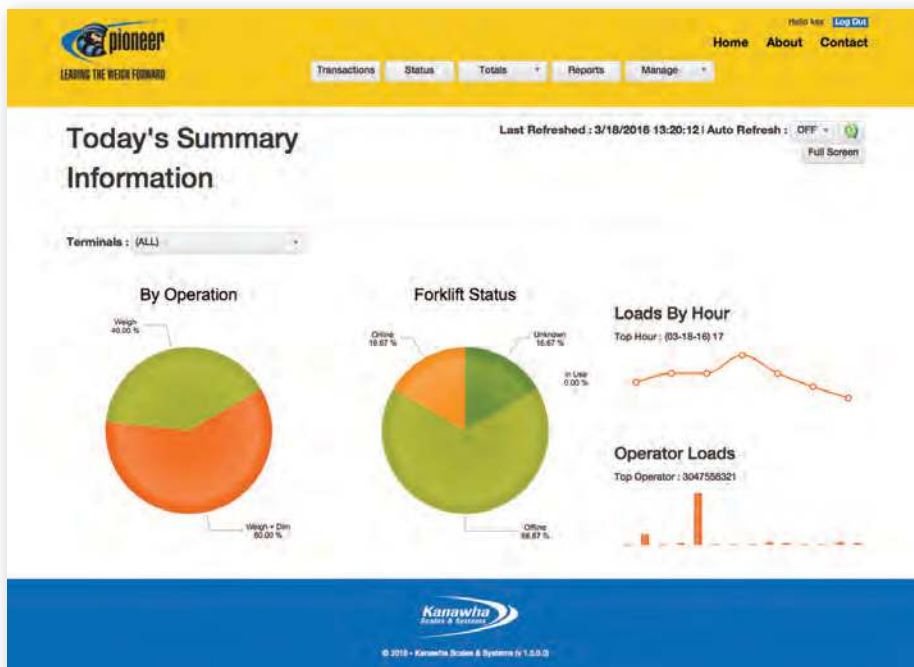
RELAY is a web based platform that serves as a centralized data collection point for all deployed Pioneer units

- Information is stored in a SQL server database
- Capture of all weight and dimension information
- Monitoring of operator efficiency
- Monitoring of all active lifts
- Provides updates via deployment services

Lift Truck Scale Features:

- Compatible with multiple vendors
- Provides multiple weight updates/sec
- Pitch and Roll readings are displayed to the operator
- mV readings for individual load cells
- Diagnostics for advance notification of issues





KSS RELAY SOFTWARE

Central reporting server provides the framework for the **PIONEER** operations. Web services provide communication with individual **PIONEER** units for status, weight, and software update information.

RELAY allows lift records to be filtered, sorted, grouped and exported. This allows for extensive data mining and statistical analysis.

RELAY provides supervisors and corporate personnel with real-time information. Information can be viewed for all or individual stations with a simple selection.

- User security provides access to only the stations the user is assigned
- Dashboards provide quick access to station and operator efficiencies
- Lift Status - Quickly see how many lifts are operating at any given time
- Usage statistics for lifts and operators
- Manage terminals and software versions
- IT Statistics for Pioneers - IP, MAC, current operator
- Ability to deploy specific software versions to individual terminals or lifts
- Web Service API to download records for interfacing with back end systems

- Web Service API to upload employee information for login verification
- See which lifts are online/offline/out of service
- Determine which operators are logged in
- See usage statistics for lifts
- See scale problems for any lifts
- Compare and trend productivity between operators
- See lifetime statistics for a unit/lift

TECHNICAL FEATURES AND SPECIFICATIONS

PROCESSOR

OS	Windows Embedded
CPU	Intel® Atom™
RAM	2 GB
Storage	Compact Flash memory card (bootable device)

LCD

Display	7" 16:9 industrial degree TFT color, TFT, LCD, LED background
Luminance	500 cd/m2 (typical)
Max Resolution	WVGA 800 x 480, 10%-100% brightness controlled by two hardware buttons on the front panel and a light sensor

TOUCHSCREEN

Type	4-wire analog resistive type touchscreen, continuous resolution
------------	---

RF FUNCTIONS

Module	IEEE 802.11a/b/g/n + Bluetooth (V4.0 LE, V3.0+HS, V2.1+EDR) combo module
--------------	--

POWER SUPPLY

Input Voltage	9~36 V with ISO7637-2 & SAE J1113 compliance
Ignition On/Off	Power on delay; Power off delay; Hardware power off delay
LED Indicator	1 x yellow LED shows system power ready (on front panel)

MECHANICAL DESIGN

Material	Aluminum
Protection	IP54
Weight	2.2 kg (~4.85 lbs.)
Dimensions (W x H x D)	255.7 x 161 x 56 mm (10.04" x 6.30" x 2.20")

ENVIRONMENTAL SPECIFICATIONS

Operating Temperature	-30° ~ 60° C
Relative Humidity	Compliant to 10 ~ 90 % @ 40° C (non-condensing)
Vibration Shock	MIL-STD-810G (US highway truck), Method 51605, SAE J1455, Class 5M3 in accordance with DIN EN 60721-3-5

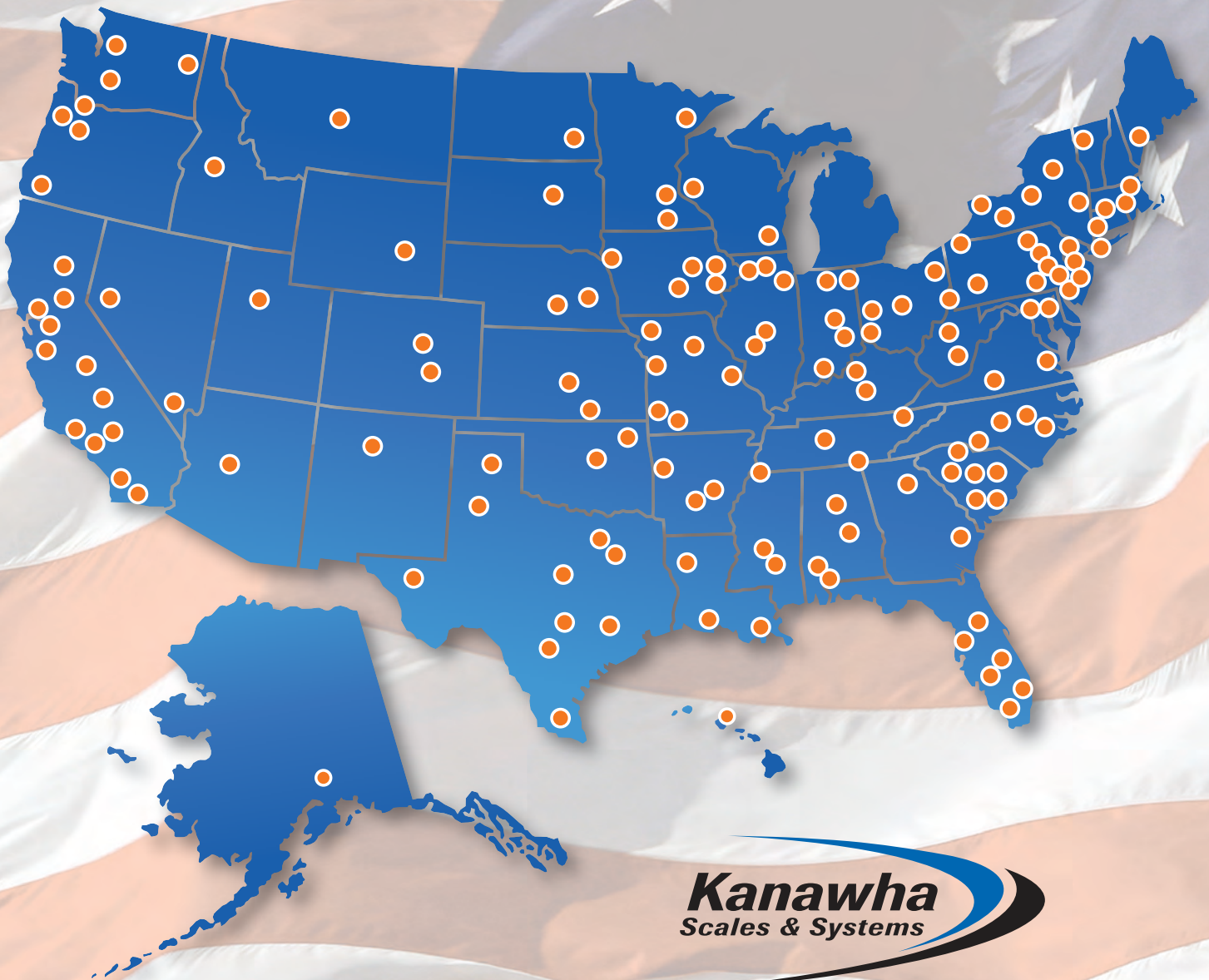
www.kanawhascales.com

*“As a total solutions provider, **Kanawha Scales & Systems** has an unbeatable combination of experience, knowledge, and commitment to success.”*

NATIONWIDE SERVICE PROVIDER NETWORK

SERVICE LIKE NO OTHER

We Provide More Than Equipment — We Provide Solutions.



Kanawha
Scales & Systems

Corporate Headquarters: Rock Branch Industrial Park • 111 Jacobson Drive, Poca, West Virginia 25159
800.955.8321 • www.kanawhascales.com